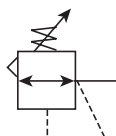


## 06R Regulators – Compact

- Secondary aspiration plus balanced poppet provides quick response and accurate pressure regulation
- Rolling diaphragm for extended life
- Two high flow 1/4" gauge ports can be used as additional outlets
- Easily serviced
- Removable non-rising knob for panel mounting and tamper resistance
- 1/4", 3/8", 1/2" ports (NPT)



### Operating information

Supply pressure (max):	250 psig (17.2 bar)
Secondary pressure ranges:	
Standard	2 to 125 psig (0 to 8.6 bar)
Low	1 to 60 psig (0 to 4.1 bar)
High	5 to 250 psig (0.4 to 17.2 bar)
Operating temperature:	32°F to 175°F (0°C to 80°C)
Low temperature	-4°F to 125°F (-20°C to 52°C)
Flow capacity†:	
High flow	1/4" 53 scfm (25 dm³/s, ANR)
	3/8" 60 scfm (28.3 dm³/s, ANR)
	1/2" 75 scfm (35.4 dm³/s, ANR)
Gauge ports (2):	1/4 inch (can be used as additional full flow 1/4 inch outlet ports)
Weight:	1.6 lb (0.7 kg)

† scfm = Standard cubic feet per minute at 100 psig inlet, 90 psig no flow secondary setting and 10 psig pressure drop.

### Ordering Information:

Port Size	Description	Part Number
1/4"	2-125 psi w/out Gauge, Relieving	06R113AC
1/4"	2-125 psi with Gauge, Relieving	06R118AC
3/8"	2-125 psi w/out Gauge, Relieving	06R213AC
3/8"	2-125 psi with Gauge, Relieving	06R218AC
1/2"	2-125 psi w/out Gauge, Relieving	06R313AC
1/2"	2-125 psi with Gauge, Relieving	06R318AC
1/4"	5-250 psi w/out Gauge, Relieving	06R115AC
3/8"	5-250 psi w/out Gauge, Relieving	06R215AC
1/2"	5-250 psi w/out Gauge, Relieving	06R315AC

NOTE: 2.0 Dia. (51 mm) hole required for panel mounting.

 Most popular.



For inventory, lead times, and kit

E17

Parker Hannifin Corporation  
Pneumatic Division

Prep-Air® II  
Products



Filters

Coalescers

Regulators

Filter /  
Regulators

Lubricators

Combinations

Accessories

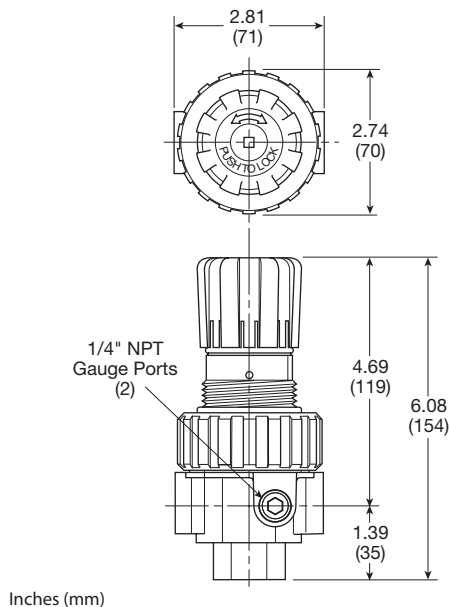
## Compact Regulators

### Material Specifications

Adjusting stem	Steel
Body	Zinc
Bonnet, piston stem, valve poppet & cap	Plastic
Collar, knob	Plastic
Diaphragm	Nitrile
Seals	Nitrile
Spring, poppet	Stainless
Spring, control	Steel

### Repair and Service Kits

Bonnet assembly kit	<b>PS715P</b>
Control knob	<b>P04069B</b>
2" dial face 60 psig (0 to 4.1 bar), gauge	<b>K4520N14060</b>
2" dial face 160 psig (0 to 11.0 bar), gauge	<b>K4520N14160</b>
2" dial face 300 psig (0 to 20.7 bar), gauge	<b>K4520N14300</b>
1-3/4" digital round face 160 psig (0 to 11.0 bar) gauge	<b>K4517N14160D</b>
Mounting bracket kit (includes panel mount nut)	<b>PS707P</b>
Panel mount nut, plastic	<b>P04082</b>
Panel mount nut, metal	<b>P04079B</b>
Reverse flow service conversion kit, relieving	<b>PS708RP</b>
Relieving (includes poppet)	<b>PS708P</b>
Non-relieving (includes poppet)	<b>PS709P</b>
1-30 psig spring	<b>P01698</b>
1-60 psig spring	<b>P04062</b>
2-125 psig spring	<b>P04063</b>
5-250 psig spring	<b>P04064</b>
Tamperproof kit	<b>PS737P</b>

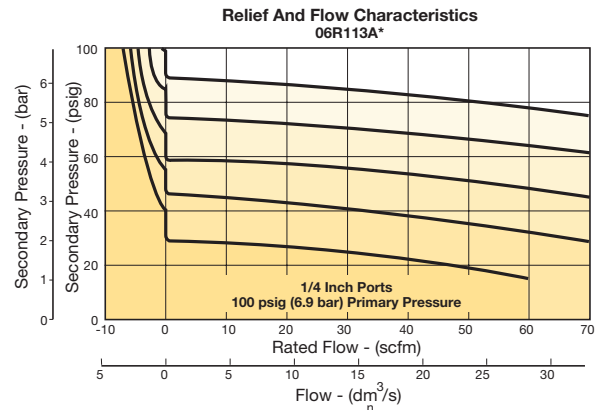


Inches (mm)

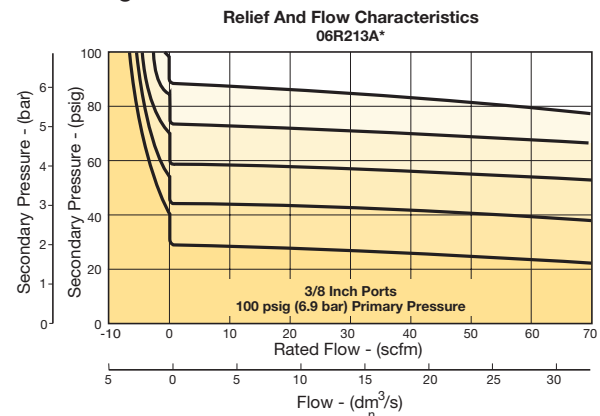
## Prep-Air II Series

### Flow Charts

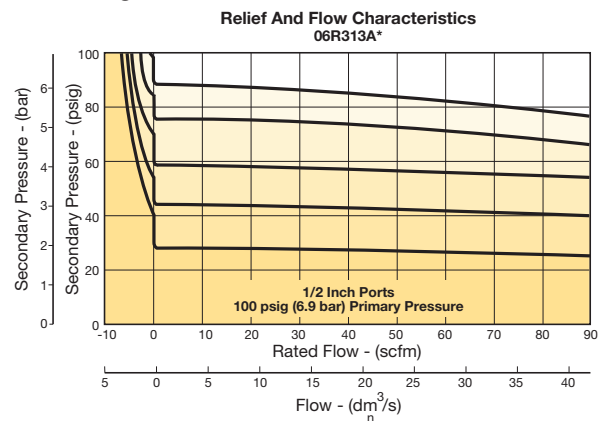
#### 06R 1/4" Regulator



#### 06R 3/8" Regulator



#### 06R 1/2" Regulator



### WARNING

Product rupture can cause serious injury.  
Do not connect regulator to bottled gas.  
Do not exceed Maximum primary pressure rating.

### CAUTION:

**REGULATOR PRESSURE ADJUSTMENT** – The working range of knob adjustment is designed to permit outlet pressures within their full range. Pressure adjustment beyond this range is also possible because the knob is not a limiting device. This is a common characteristic of most industrial regulators, and limiting devices may be obtained only by special design. For best performance, regulated pressure should always be set by increasing the pressure up to the desired setting.



For inventory, lead times, and kit

E18

Parker Hannifin Corporation  
Pneumatic Division